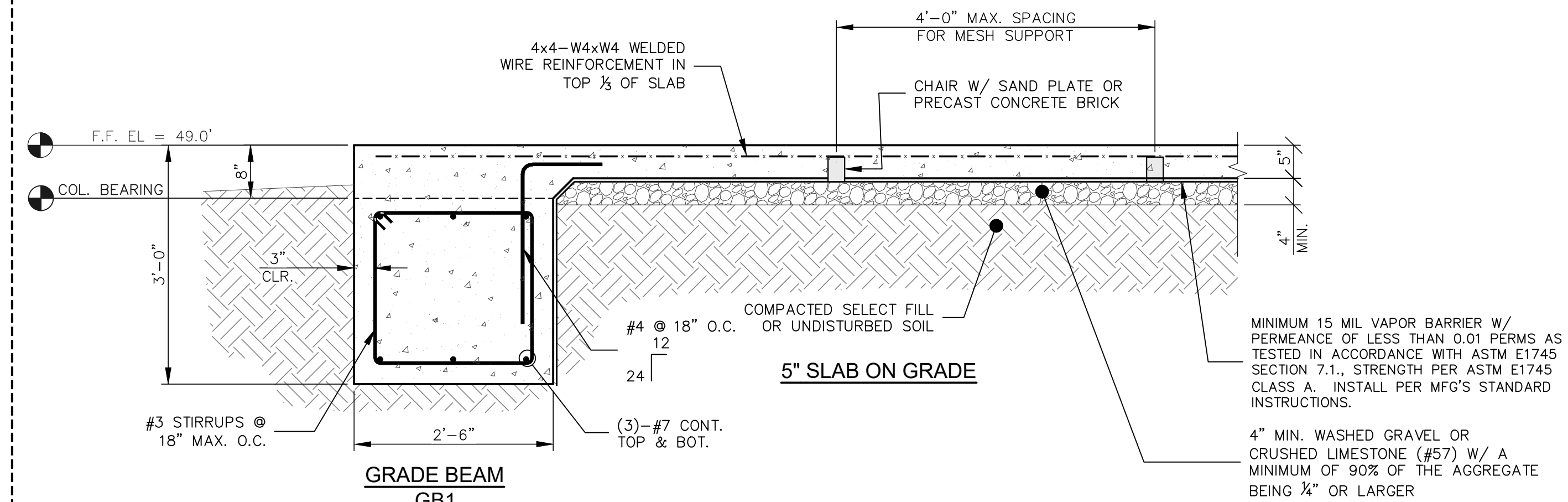
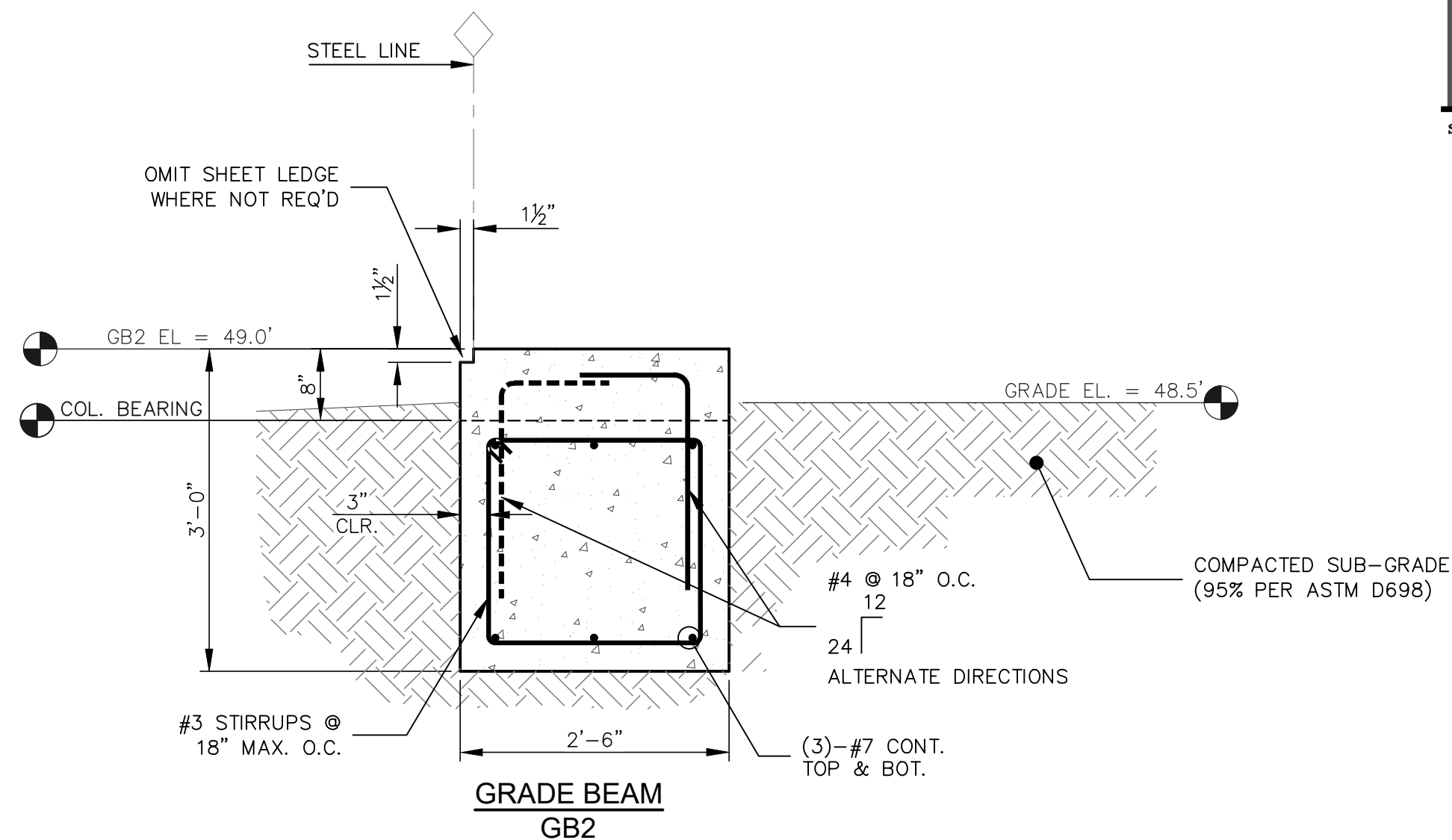


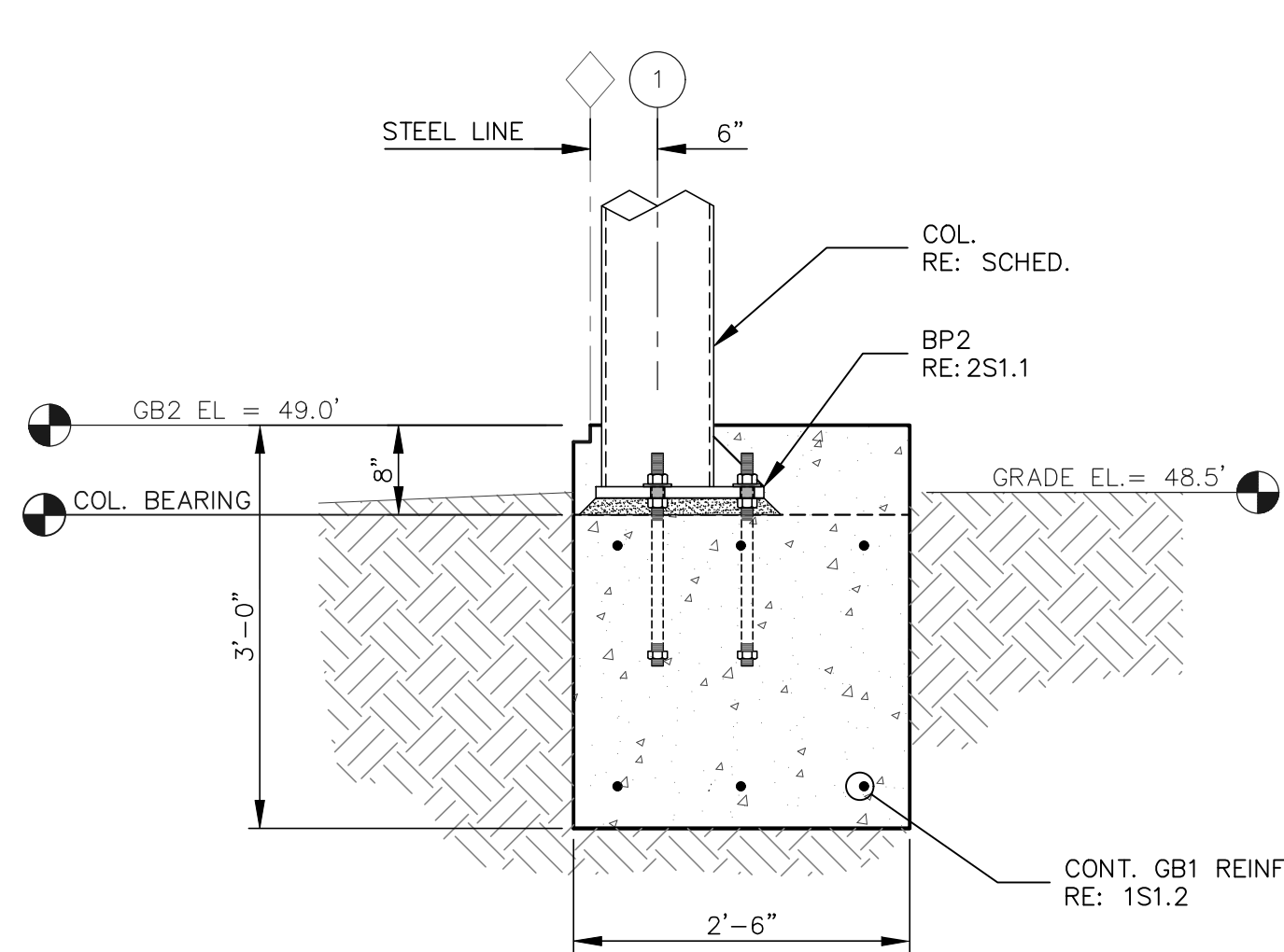
ALTERNATE #1



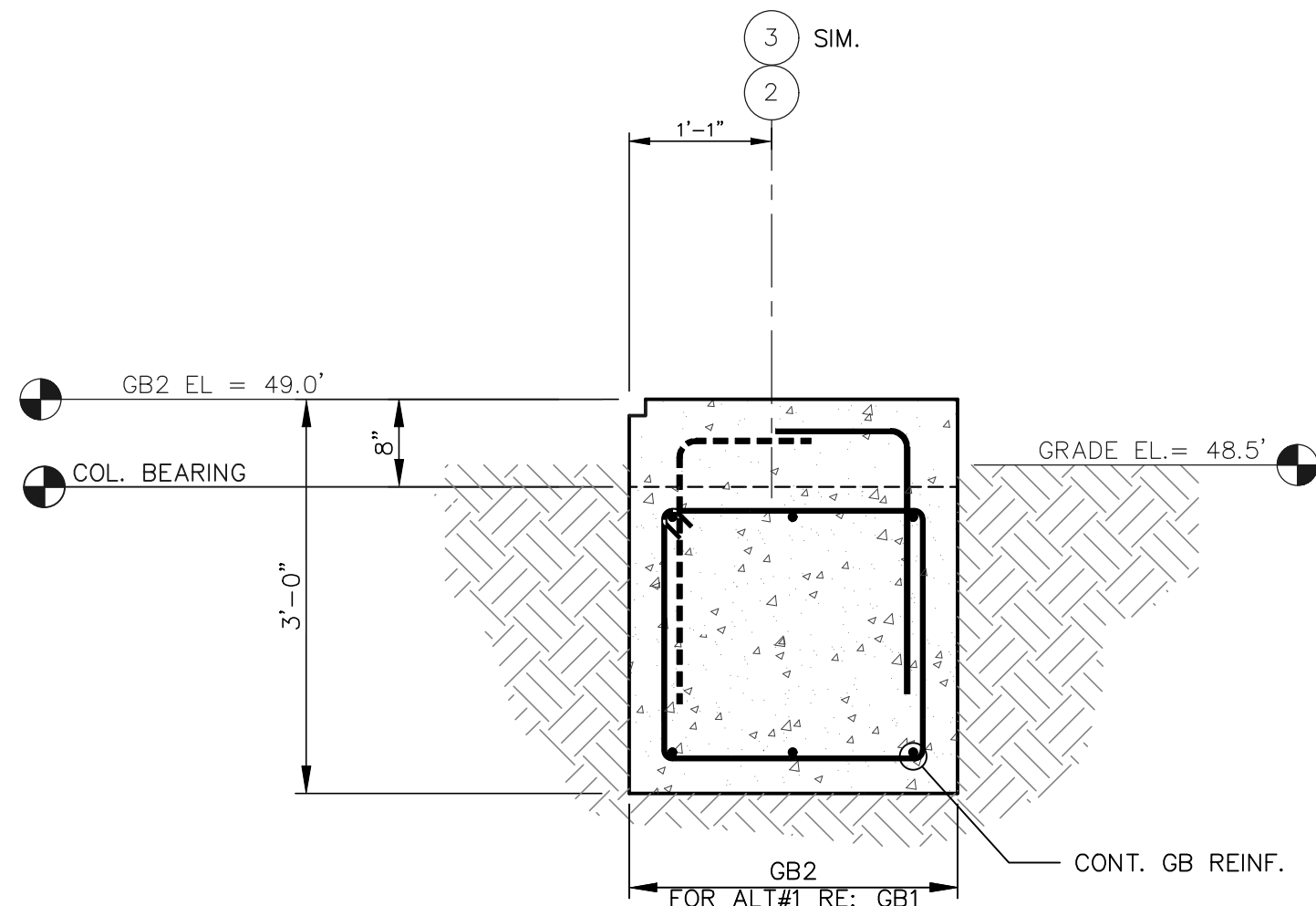
1 FOUNDATION SECTION
SCALE: 3/4"=1'-0"



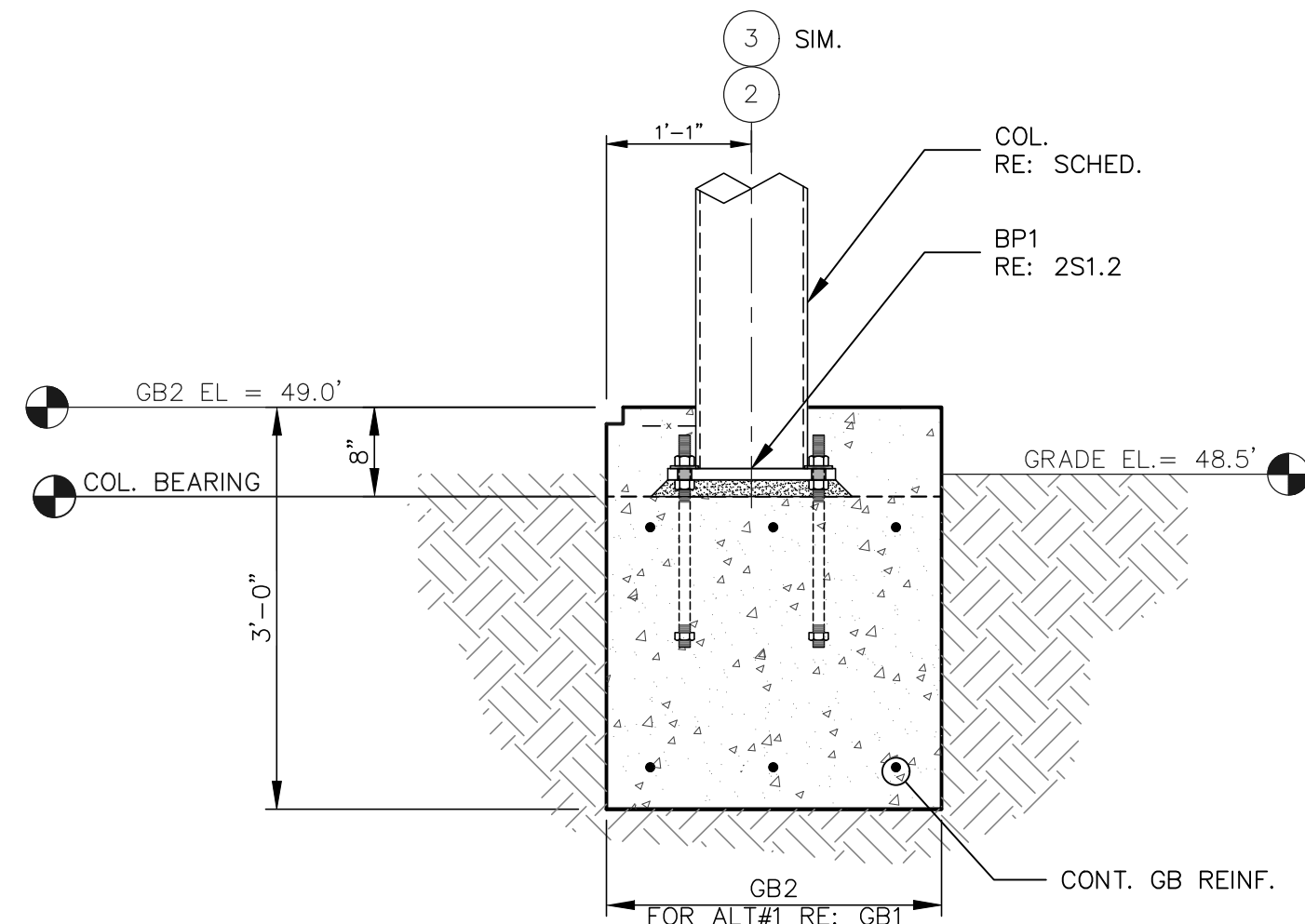
2 FOUNDATION SECTION
SCALE: 3/4"=1'-0"



3 SECTION
SCALE: 3/4"=1'-0"

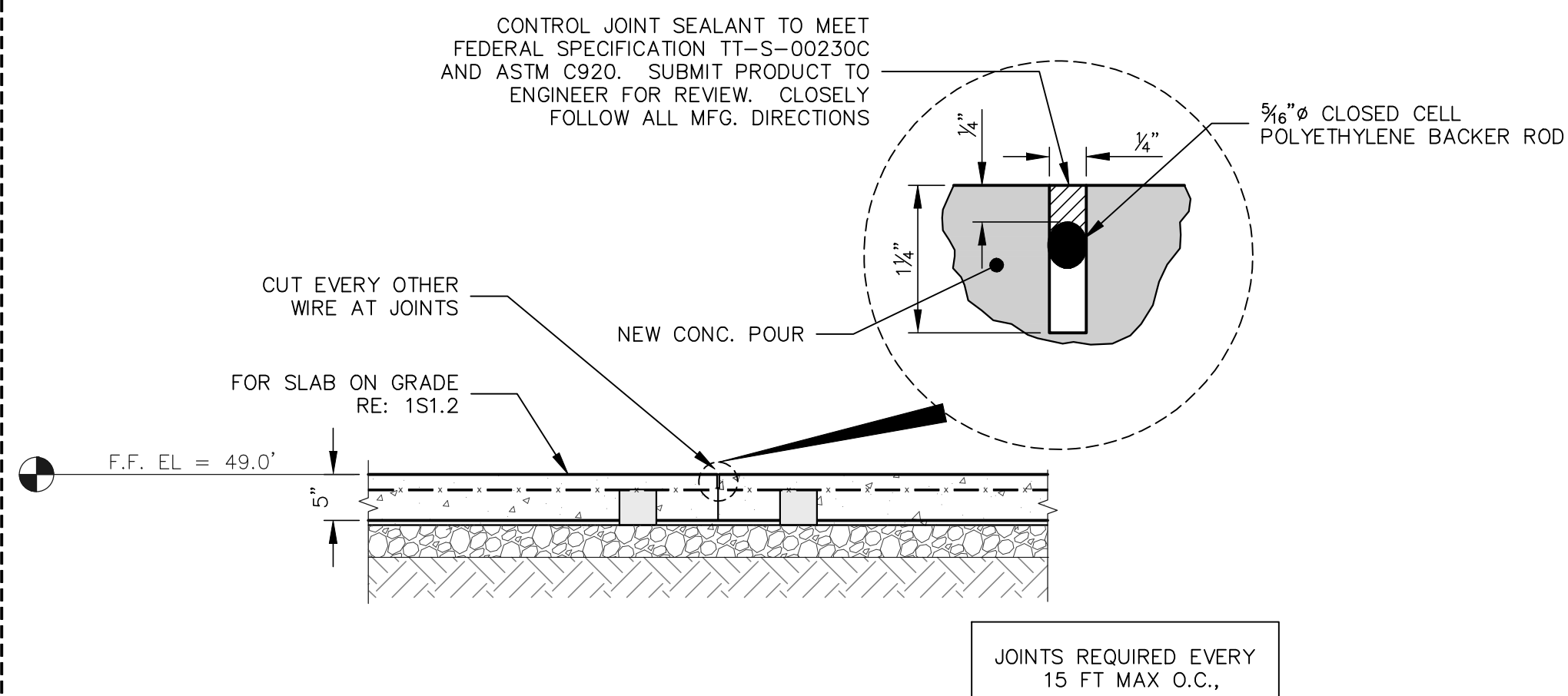


4 SECTION
SCALE: 3/4"=1'-0"



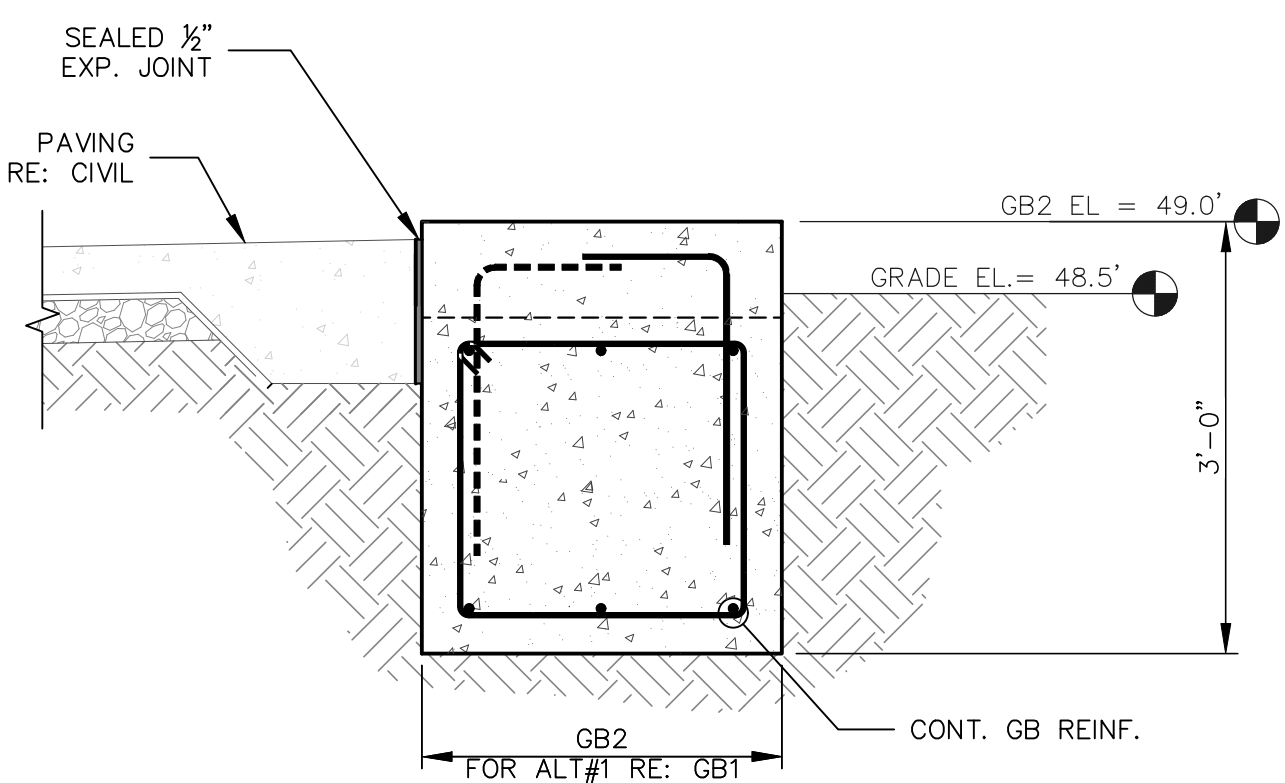
5 SECTION
SCALE: 3/4"=1'-0"

ALTERNATE #1

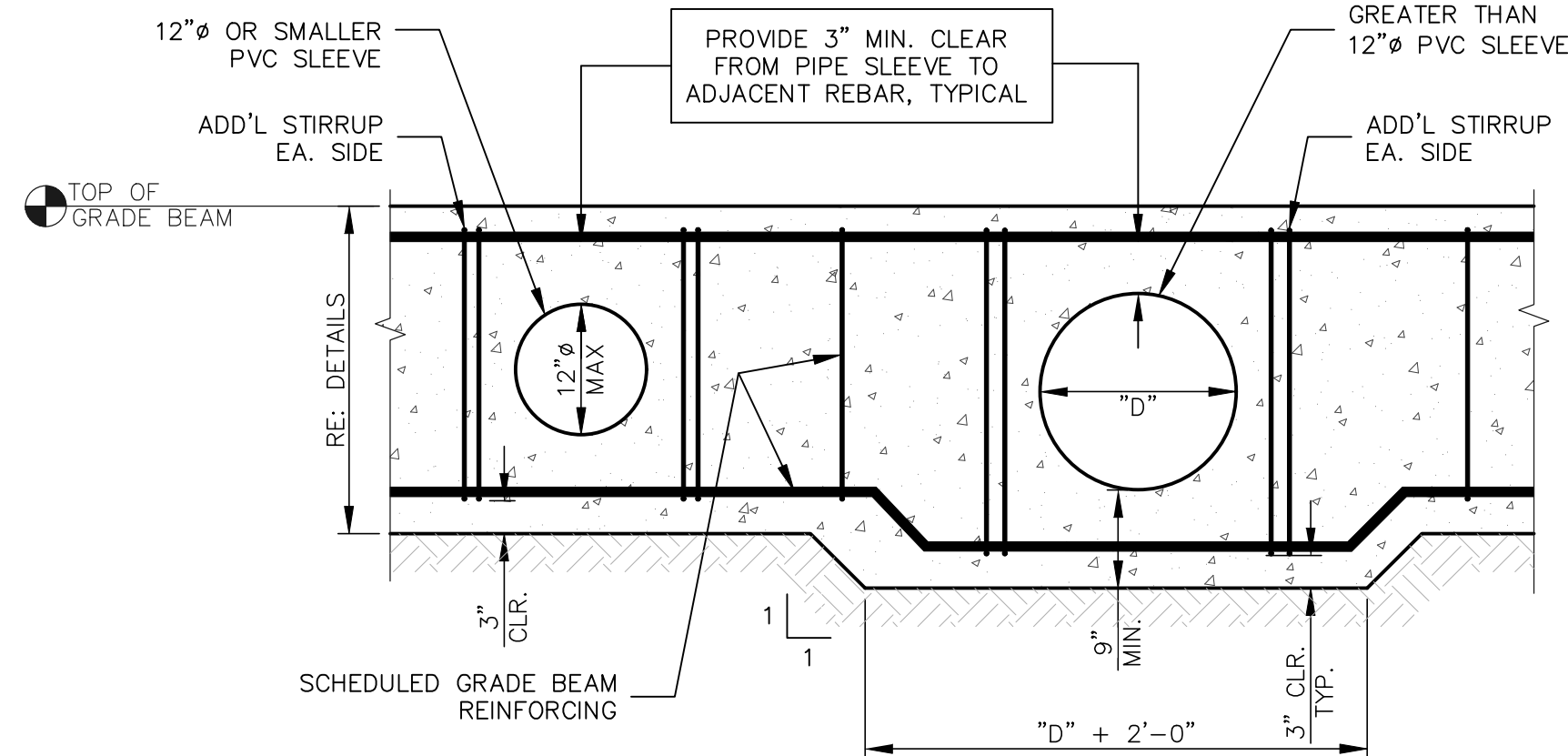


6 SLAB CONTROL JOINT
SCALE: 3/4"=1'-0"

- NOTES:
- BEGIN SAWCUTTING JOINTS WHEN THE CONCRETE IS FIRM ENOUGH NOT TO BE TORN OR DAMAGED BY THE BLADE.
 - JOINTS PRODUCED USING CONVENTIONAL PROCESSES ARE MADE WITHIN 4 TO 12 HOURS AFTER THE SLAB HAS BEEN FINISHED IN AN AREA (4 HOURS IN HOT WEATHER TO 12 HOURS IN COLD WEATHER). FOR EARLY-ENTRY DRY-CUT SAWS, THE WAITING PERIOD SHOULD VARY FROM 1 HOUR IN HOT WEATHER TO 4 HOURS IN COLD WEATHER AFTER COMPLETING THE FINISHING OF THE SLAB IN THAT JOINT LOCATION.
 - MARK THE EXACT LOCATION OF THE CUT WITH A CHALK LINE OR STRING LINE SO THE SAW OPERATOR KNOWS WHERE TO SAW THE JOINT.
 - BEFORE INSTALLATION OF JOINT FILLER, CLEAN PER MFG. DIRECTIONS.



7 SECTION
SCALE: 3/4"=1'-0"



8 TYPICAL GRADE BEAM PIPE SLEEVE (IF REQ'D)
SCALE: 3/4"=1'-0"